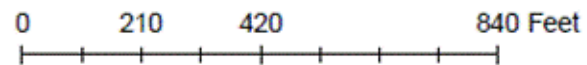
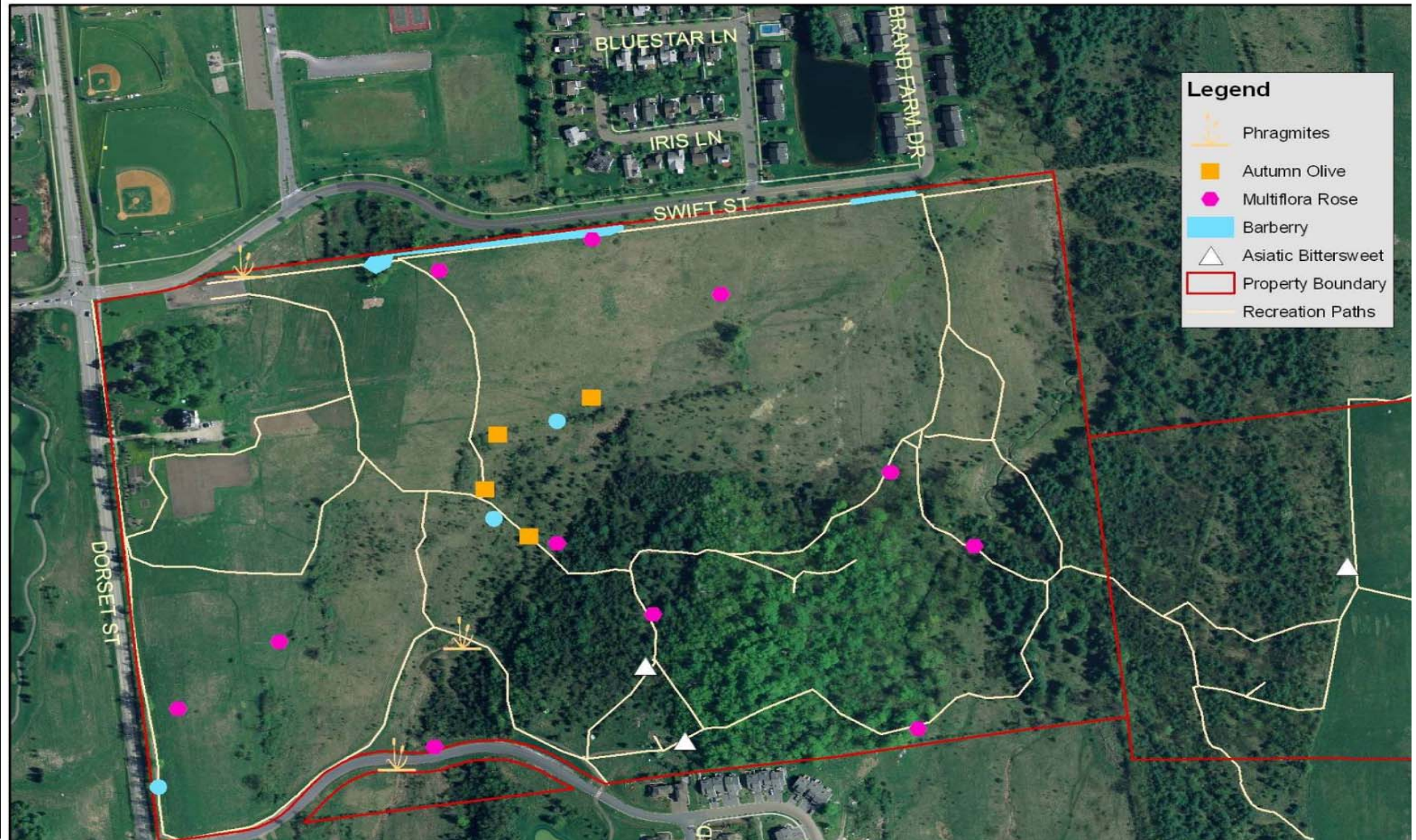


Wheeler Nature Park

Map 8: Isolated Invasives



Created by the South Burlington Natural Resources Committee
Drawn by Cathyann LaRose, AICP
October 7, 2011



WHEELER NATURE PARK



South Burlington

WHEELER NATURE PARK INVASIVE SPECIES GUIDE



A) **Buckthorn**, is a bush that is a common invasive species in Wheeler park. It has black berries that contain a natural laxative, that prevents the wildlife that eat it from absorbing the sugars in the berries.



B) **Japanese barberry** is a bush with red leaves and dark red, oval shaped berries. It grows so thick that it crowds out other native plants in the park.



C) **Asiatic Bittersweet** is characterized by round-ish, yellow-green leaves. With red berries, or green or yellow capsules depending on the time of year. It is a danger because when it grows, it uses other plants as support and chokes them out.



D) **Autumn Olive**, is a bush with long oval shaped leaves and red berries. It is widely spread by birds. It is extremely hard to control due to the fact that even after cutting or burning, the plant still re-sprouts. It produces quite a bit of shade causing nearby plants to not receive any sunlight.



E) **Honeysuckle**, is found throughout the park. It has white or pink flowers. These flowers are fragrant and last from the spring and into the late fall. The berries of most varieties are mildly poisonous. Like most invasive shrubs, it grows rapidly and crowds out sunlight for other plants.



F) **Common Reed**. Cattail marshes are in danger because of this species. Common reed grows in wetland areas, which is exactly where cattails grow. Common reed grows so abundant that, there is just no room for the cattails to grow. These plants are similar looking to cattails. They have long stems and long green stalks. They can grow as tall as 16 feet.